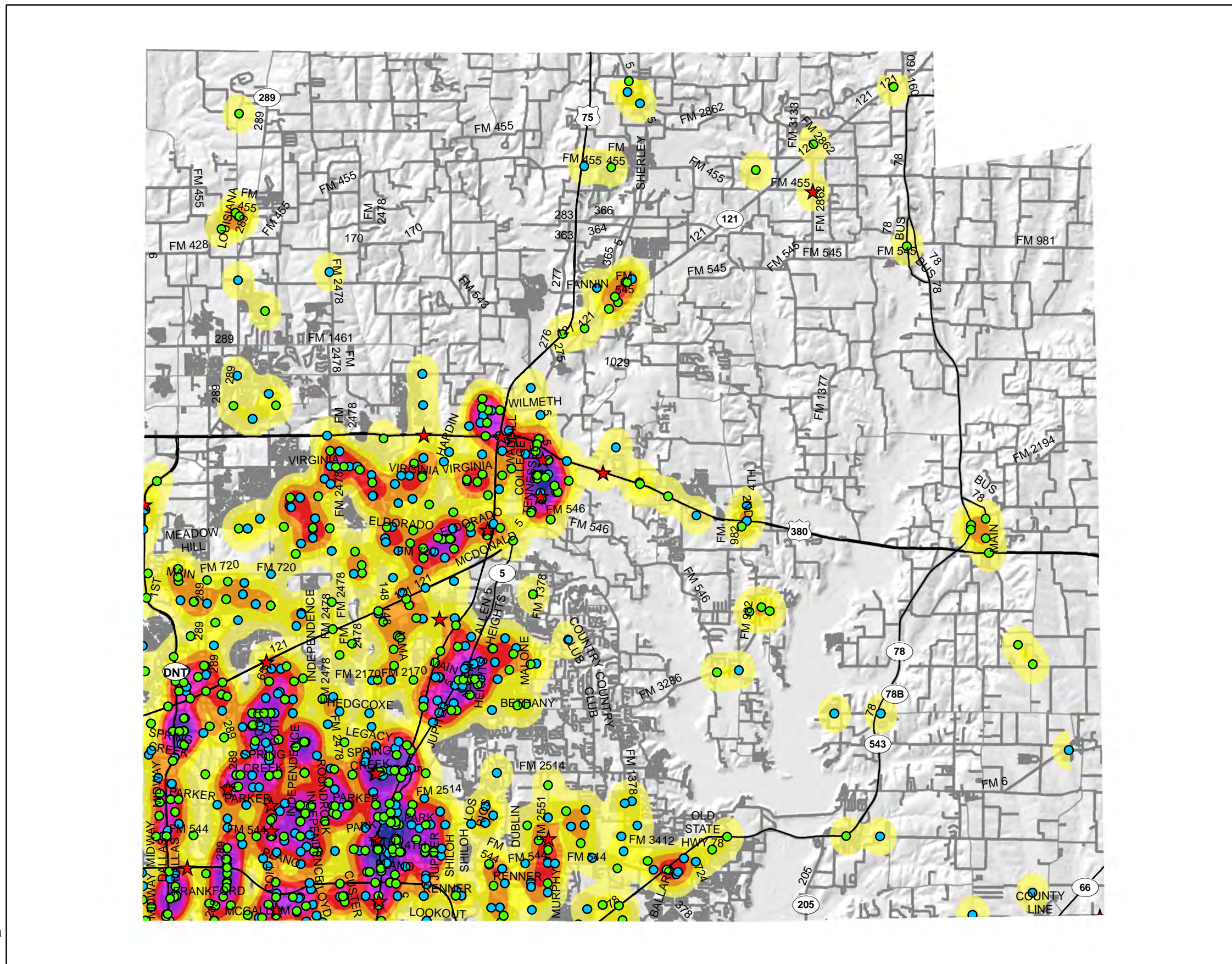
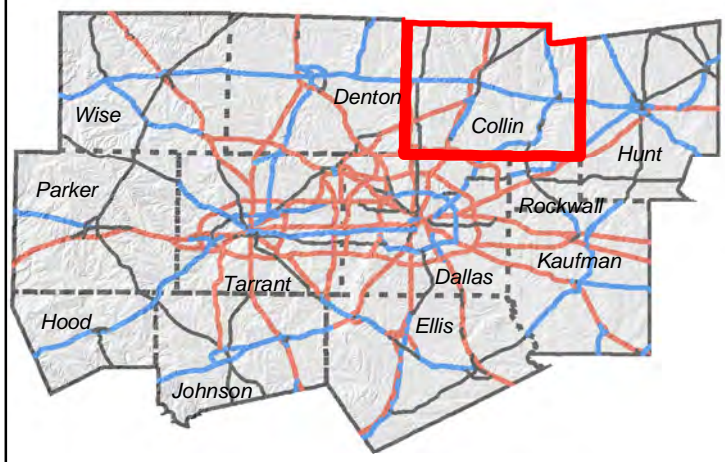


Collin County Bicycle and Pedestrian Crash Locations and Density (2013 - 2017)

Legend

- ★ Fatal Bicycle or Pedestrian Crash Location - (22)
- Non-Fatal Pedestrian Crash Location - (360)
- Non-Fatal Bicycle Crash Location - (347)
- No Crash Density
- Low Crash Density
- Medium Crash Density
- High Crash Density
- Very High Crash Density
- Highway
- Major Arterial
- Minor Arterial
- Passenger Rail

NCTCOG 12 County Metropolitan Planning Area



Note: Density concentration is calculated as a magnitude per unit area from crash point features and is based on each county's geography. Blue symbolizes higher concentration of crashes and yellow displays lower concentrations.

- 1.) Source: TxDOT's Crash Records Information System - 2017 data is current as of April 2018. All TxDOT disclaimers apply.
- 2.) Data displayed contains reportable crashes with latitude and longitude information. Additional crashes may have occurred.
- 3.) This data is composed of TxDOT "Reportable Crashes" that occurs or originates on a traffic way, results in injury to or death of any person, or damage to the property of any person to the apparent extent of \$1,000.

