

# User Guide for Google Earth - Bicycle and Pedestrian Crash Information

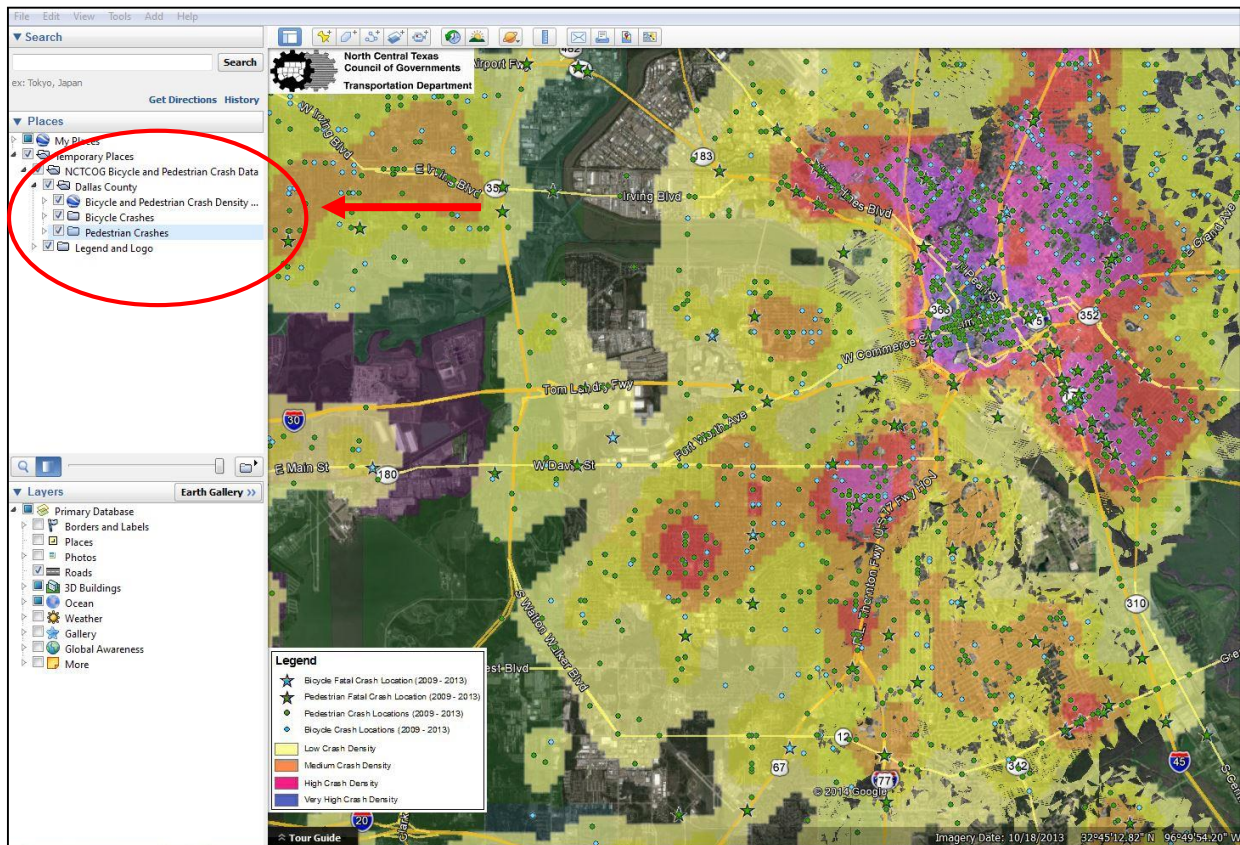
This is a quick user guide on how to view the interactive KML file maps in Google Earth.

## Don't have Google Earth?

You will need to Download Google Earth™ from: [earth.google.com](http://earth.google.com) to access the interactive County Maps.

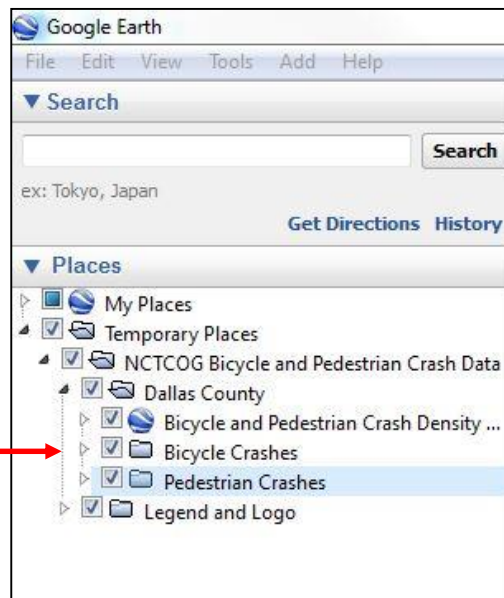
Once you have Google Earth™ installed, simply click on the “County Maps File” link in the website to download and view the data.

## The Basics



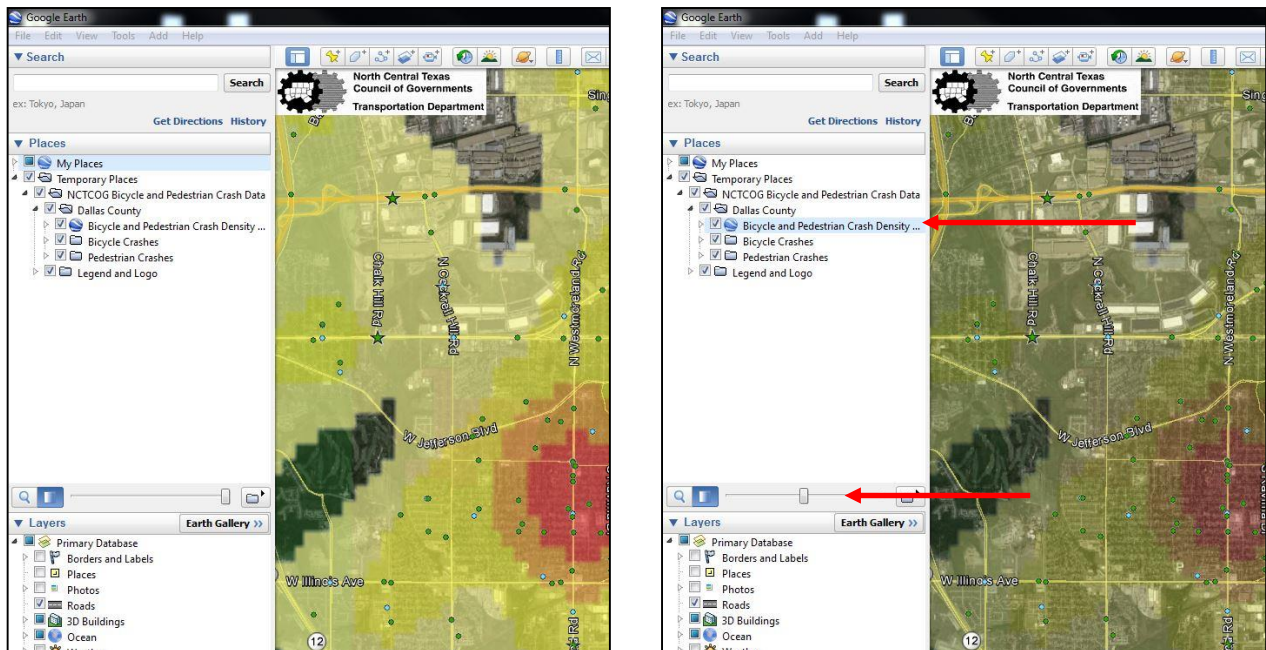
This is what your screen should look like once you click on “KML File Maps” on the webpage. On the left hand side of the screen you will notice the files that you have uploaded to Google Earth. These are all of the available bicycle and pedestrian crash maps for the Dallas-Fort Worth region.

## Places Pane



You may select certain maps shown in the screen by simply “checking” or “un-checking” any of the boxes on the Places pane on the left side of the screen.

## Density Maps



You may adjust the opacity of the density colors on the screen by simply selecting the density layer and moving the opacity slider to the left side of the Places pane.